

Memphis 3.0

How - To Guide

Comprehensive Plan

What

A comprehensive plan is a guide for a city's future. It outlines improvements for roads, parks, housing, and public services, helping to create a better place to live for everyone. Think of it as a roadmap for the city's growth and development.



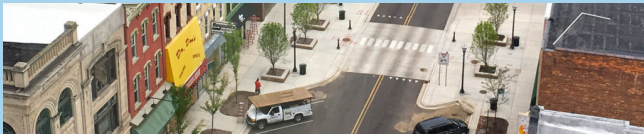


How - To Guide

Comprehensive Plan

Why

A comprehensive plan is essential because it sets a clear and ambitious vision for our city's future, reflecting community desires. By gathering public input, it ensures predictable growth and development, guiding how the city invests in infrastructure, housing, and services, making Memphis a better place to live for everyone.



Memphis 3.0

How - To Guide

Comprehensive Plan

How

The Memphis 3.0 Comprehensive Plan was shaped by significant public input. From 2016 to 2018, over 15,000 Memphians shared their priorities, values, and visions for their neighborhoods' future.



Memphis

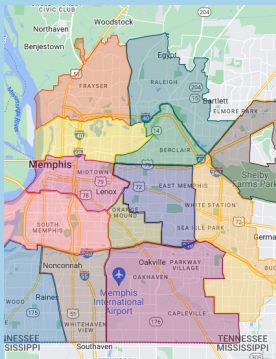
3.0

How - To Guide

Planning Districts

What

Think of planning districts as puzzle pieces that come together to form our city's unique landscape. Each district has its own character, history, and community spirit. From bustling urban centers to serene residential areas, our planning districts showcase the diversity of life in our city.



Planning Districts



Why

Planning districts allow us to focus on the specific needs and aspirations of each neighborhood. By tailoring development plans to local preferences, we can create spaces that truly reflect the values of the people who live and work there.

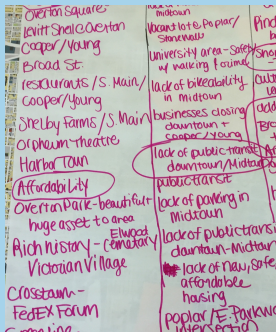
Memphis 3.0

How - To Guide

District Priorities

What

District Priorities are the goals and needs identified by residents for their specific areas. Each district's priorities reflect the unique voices of its community members, ensuring that the plan addresses local concerns and aspirations.





How - To Guide

District Priorities

Why

District Priorities are crucial because they make sure the Memphis 3.0 plan meets the specific needs of each community. By focusing on what residents want, the plan helps ensure that improvements are made fairly across the city. This approach improves quality of life for everyone and makes sure that every neighborhood benefits and thrives.



District Priorities

How

District Priorities were set through community workshops, surveys, and meetings during the plan's creation. Residents' input was gathered and used to set specific goals for each district. These goals guide projects, and are updated every five years to stay relevant and effective.



Anchors



What

Anchors are the places where communities do things together. In some cases, they are places where Memphians from across the City gather to work, shop, learn, play, and celebrate. In others, anchors might serve primarily the people who live nearby. Anchors are where the action is, or has been, and where it will be in the future.

Memphis 3.0

How - To Guide

Anchors

Why

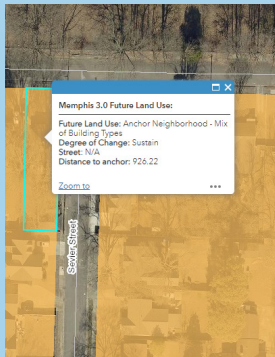
Anchors were identified through public engagement when the comprehensive plan was created. By focusing on these anchors, Memphis 3.0 can positively impact the largest number of Memphians. By improving the heart of a neighborhood, we can improve the surrounding community.



Memphis 3.0

How - To Guide

Future Land Use Map



What

The Future Land Use Map is a vital component of the Memphis 3.0 Comprehensive Plan, and recommends land uses based on community input, existing conditions, and the plan's overall vision. Land use means how land is used, for houses, businesses, churches, and more.

Memphis

3.0

How - To Guide

Future Land Use Map

Why

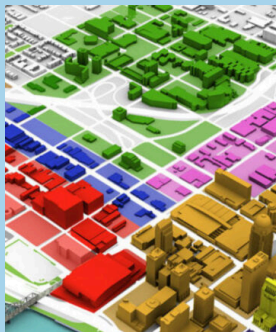
We use the future land use map to translate community values, vision, needs, and desires into tangible development guidelines for the future. By aligning our physical growth with the aspirations of our residents, we are fostering a sense of belonging and shaping a city that reflects the collective dreams of its people.



Rezoning

What

Rezoning means changing the rules about how land in an area can be used. These rules decide the types of new buildings, businesses, or homes that can be built there, which affects how neighborhoods and cities grow.



Rezoning

Why

Rezoning will allow for a wider variety of housing and business types, giving people more choices. This means more diverse housing options that cater to different preferences and budgets, enhancing housing affordability. The introduction of new business types will stimulate economic growth, creating jobs, and boosting local commerce.



Memphis 3.0

How - To Guide

Rezoning

How

Get involved in your neighborhood's future! Join our workshops in-person or virtually starting in August and be the hero of your own community's story. Share your neighborhood priorities and shape the future together with Memphis 3.0.

